

MAPPING NITROGEN STATUS IN SOIL AND FOLIAGE OF COTTON PRODUCING AREA OF SOUTHERN PUNJAB, PAKISTAN

EJAZ RAFIQUE, S.M. GILL, HUMAIR AHMED*, GHULAM SABIR HUSSAIN AND M.M. RAZA

Land Resources Research Institute, NARC, Islamabad, Pakistan

**Corresponding author's email: humair_uaar@yahoo.com*

Abstract

Nitrogen (N) is deficient in more than ninety percent soils of Pakistan. Nitrogen deficiency and poor management causes yield losses in most of the crops in Pakistan therefore its efficient management is vital for ensuring optimum crop production. A field survey was conducted for mapping NO₃-N content in soils and total N content in the foliage of cotton producing area using geo-statistics and GIS as diagnostic tools. Seventy geo-referenced soil samples were collected from the surface soil (0-15cm depth) along with associated foliage samples. Our results indicated that bioavailable NO₃-N content in soil ranged from 3.43-14.24 µg g⁻¹ with the mean of 8.47 µg g⁻¹. Thirteen out of 16 soil series were categorized as deficient (< 11 µg g⁻¹) in plant available NO₃-N. Nitrogen content in the foliage ranged from 2.44–4.55%, with a mean of 3.52%. Forty-three percent of total analyzed plant samples were categorized as N deficient. Moderate to strong spatial dependence of NO₃-N in the soil and foliage provided an opportunity to prepare digital maps for classifying the whole area into various zones. Generated maps indicating differential nutrient status of cotton producing area provide regional scale information. This information will be helpful for future studies on site-specific nutrient management.

Key words: GIS, Geo-statistics, Nitrate-N, Environment, Fertility, Site-specific.

Introduction

Specific Nutrient Management (SSNM) is necessary in the intensive farming systems, because of various factors affecting its availability to plants which include its kinetics, uptake, mineralization, immobilization, and other factors like denitrification and leaching. Furthermore, condition of prevailing weather and soil, tillage operations being carried out in the soils and the crop growth stages during a growing season also affect various components of N-cycle, which makes it more difficult to control and manage nitrogen content in the soils (Hirel, 2011). Nitrogen (N) is an important plant nutrient, and necessary input to maintain economical agricultural production worldwide. Predetermination of appropriate nutrient doses with special reference to space and time is a pre-requisite for site specific nutrient management. Application of site-specific N prescriptions is necessary for increasing N use efficiency and to thwart adverse environmental effects (Ferguson *et al.*, 2002).

Nitrogen is one of the main nutrient being used for crops as fertilizer and is considered the most yield limiting nutrient because most of agricultural soils are deficient in N (Ledgard *et al.*, 2014). Consumption of N is more in the country as compared to other nutrients. Farmers apply large quantities of N to crops. Moreover, soil- nutrient- plant system inefficiencies prevent efficient utilization of N, leaving it in soil or lost through volatilization, which results in wastage of resources and is of great concern for environmental pollution.

In Pakistan fertilizers such as urea and diammonium phosphate (DAP) are primarily used as N fertilizer. According to Agricultural Statistics 2014-15 on an average 3.3 million tons N containing fertilizer was used in the country mainly focusing wheat, Maize and cotton crops as it shows a N:P ratio of 3.39:1. Despite the higher use of N fertilizer the average N recovery efficiency (NRE) for cereals stands ~35% in N fertilizer consumption keeping the use of N fertilizer on higher

side. The low NRE emphasizes the need for looking into remaining 65% of the applied N and understanding its fate (Arain *et al.*, 2000).

In upper 15 cm of alkaline calcareous soils there exists 0.1%-0.6% N (Cameron *et al.*, 2013). Such stored N converted into two N species viz., NH₄⁺ and NO₃⁻ both directly utilized by plant. Besides losing through volatilization NO₃⁻ is mobile and is potentially leached to aquifer contributing human health hazards of high by NO₃⁻ in drinking water (Boyer *et al.*, 2002; Ledgard *et al.*, 2014). It therefore seems imperative to quantify how much of the applied N actually leads to plant uptake and effectively utilized in ecosystem.

One of the crucial components of SSNM is spatial analysis or digital mapping of N in soil through the use of Geographic information system (GIS) tools, which leads to know the nutrient status of soil at a single glance (Attar *et al.*, 2012; Ahmed *et al.*, 2017). Application of nutrient fertilizer doses where and when needed using digital maps leads to decrease in yield losses due to over or under-fertilization (Ahmed *et al.*, 2014). Soils that have a high degree of spatial variability in N content can be better managed using site-specific management zones.

Rahim Yar Khan is the main district of cotton growing area in Pakistan. The use of nitrogenous fertilizer is increasing in the area. Soil series being a basic unit of soil classification has an immense importance. Soil series provides the basis for studying soil characteristics as it includes soils similar in most of the characteristics (Nabi *et al.*, 2018). Although considerable work has been done on nutrient management in cotton crop, but a meager information is available on site-specific nutrient status and its management.

Keeping in view the importance of N in the crop production, its losses and use of site specific nutrient management technology for efficient nutrient management for crop production, this research work was carried out to prepare the digital maps indicating the N content in the cotton fields of the district.

Materials and Methods

Soil sampling, processing and analysis: Rahim Yar Khan Area is located between the 28.4212° N, 70.2989° E in the Punjab province of Pakistan (Fig. 1). Climatic conditions are congenial for growing cotton. Seventy soil and associated foliage samples were collected from the representative soil series to cover the whole cotton producing area. Precise locations were recorded with the help of GPS (Garmin e-trex) coordinates are given in (Table 1). Sampling frequency from representative soil series is manifested in (Table 2). Associated foliage samples were also collected to examine the N content. Soil samples were air dried; ground; passed through a 2 mm sieve, labeled to process for further analysis. The samples were analyzed for soil properties such as texture (Gee & Bauder, 1982), pH by 1:2 soil water suspension (McLean, 1982), CaCO₃ contents (Leoppert *et al.*, 1984), organic matter (Nelson & Sommers, 1983), and plant available NO₃-N content by Ammonium bicarbonate diethylene triamine penta acetic acid (ABDTPA) method (Soltanpor & Workman, 1979). Critical values described by Soltanpour, (1985) were used to classify the soil in to low (<11 µg g⁻¹), medium (11-20 µg g⁻¹) and high (>20 µg g⁻¹) in plant available NO₃-N content.

Statistical and Geo-statistical analyses: Descriptive statistical measure like mean, standard deviation, kurtosis and skewness were applied to the data sets obtained for plant available NO₃-N content in the soil and total N content in the foliage to examine the central tendency. Effect of various physico-chemical properties availability of N was examined by applying correlation analysis (Steel & Torrie, 1980). Normal distribution of NO₃-N content in the soils and total N content in the foliage was characterized using the Kolmogorov-Smirnov (K-S) test for goodness-of-fit (Sokal & Rohlf, 1981). Heterogeneity of dataset regarding plant available NO₃-N content and total N content in the foliage was quantified by applying co-efficient of variance (CV%). Variables having CV% values < 15%, 15 to 35%, and >35% were categorized as least, moderate and highly variable respectively (Wilding, 1985). Geostatistical analyses and digital mapping was carried out using ArcGIS 10.5 software. Semivariogram modeling was performed to quantify the spatial variability of plant available NO₃-N in the soils and total N content in the foliage (Ahmed *et al.*, 2017; Bhatti *et al.*, 1991). Ordinary kriging (Equation 1) was applied to prepare digital maps (Isaaks & Srivastava, 1989). Nugget value enumerates the errors and uncertainty due to sampling and small scale variability. Changes in prediction due to parent material, and vegetation are summarized in sill value. Semivariance is measure of scattering of all observations below target value. Separation distance over which spatial dependence is more apparent is called range (Aishah *et al.*, 2010). Extent of spatial dependence for various attribute data is quantified by using an indicator spatial ratio. A ratio value of <25, 25-75, and >75 percent represents highest, medium and weak spatial dependence respectively (Cambardella, 1994; Attar *et al.*, 2012).

Ordinary kriging was adopted for interpolation of attribute data owing to its higher flexibility. Average standardized error (ASE) (Equation 2) and root mean square error (RMSE) (Equation 3) were used examining the simulation accuracy (Robinson & Metternicht, 2006). Closer values of average standardized error and root mean square error were taken as criterion examining prediction accuracy (Hani *et al.*, 2010).

$$Z_K(X_0) = \sum_{i=1}^{n(h)} \lambda_i Z(X_i) \quad \text{Equation 1}$$

$$ASE = \frac{1}{n} \sum_{i=0}^n [Z^* x_i - Z x_i] \quad \text{Equation 2}$$

$$RMSE = [\sum_{i=0}^n (Z^* x_i - Z x_i)^2 / N]^{\frac{1}{2}} \quad \text{Equation 3}$$

where Z*(x_i) and Z(x_i) represents the observed and predicted values respectively. The ME and RMSE values are in the range of [0, ∞].

The whole area was classified into five nutrient variability zones on the basis of differential P content in the soils.

Results and Discussion

Physico-chemical properties of the soils: The basic descriptive statistics of soil physico-chemical properties is summarized in Table 3. Our data indicated that sand, silt, clay and EC were highly heterogeneous as the CV was more than 35%. Contrastingly, data regarding CaCO₃ and pH indicated the least heterogeneity with CV less than 15%. Soils of all the surveyed cotton fields contained 6.1-12.0% CaCO₃. Considering a minimum of 1% CaCO₃ content for a soil to be calcareous, all the sampled soils in Rahim Yar Khan District were classified as calcareous. However, there was variation in CaCO₃ content of different soil series.

The soils of Rahim Yar Khan District were generally low in organic matter as its content ranged from 0.42 to 1.72% with a mean of 0.86%. In fact, 57% fields contained less than 0.86% organic matter, which is considered minimum requirement for good plant growth (Cottenie, 1980). Only three soil series, out of a total of 16 (Bahalike, Missan, and Sultanpur) had adequate organic matter content. Electrical conductivity (1:1) of the surveyed soils ranged from 0.26 to 1.40 dS m⁻¹ with a mean value of 0.59 dS m⁻¹ in soils (Table 3). Harunabad soil series had the lowest (0.30 dS m⁻¹) while Missan soil series had the highest (1.25 dS m⁻¹) mean EC. Thus, all the surveyed soils were not salt affected. The soils of Rahim Yar Khan district were alkaline in reaction with pH varying from 8.15 to 8.80. Mean pH value for the soils was 8.34 (Table 3).

Silty clay and silt loam were the dominant textural classes found in the surveyed area as 44 % of the total analyzed samples were categorized as silty clay and 22% as silt loam. Other textural classes found in the surveyed area were clay, loam, loamy sand, sandy loam, and silty clay loam (Table 4).

Textural classes of all collected soil samples demonstrated their suitability to grow cotton as well as other agronomic crops. On an average, soils contained 25.77% clay, 39.28% silt and 34.43% sand.

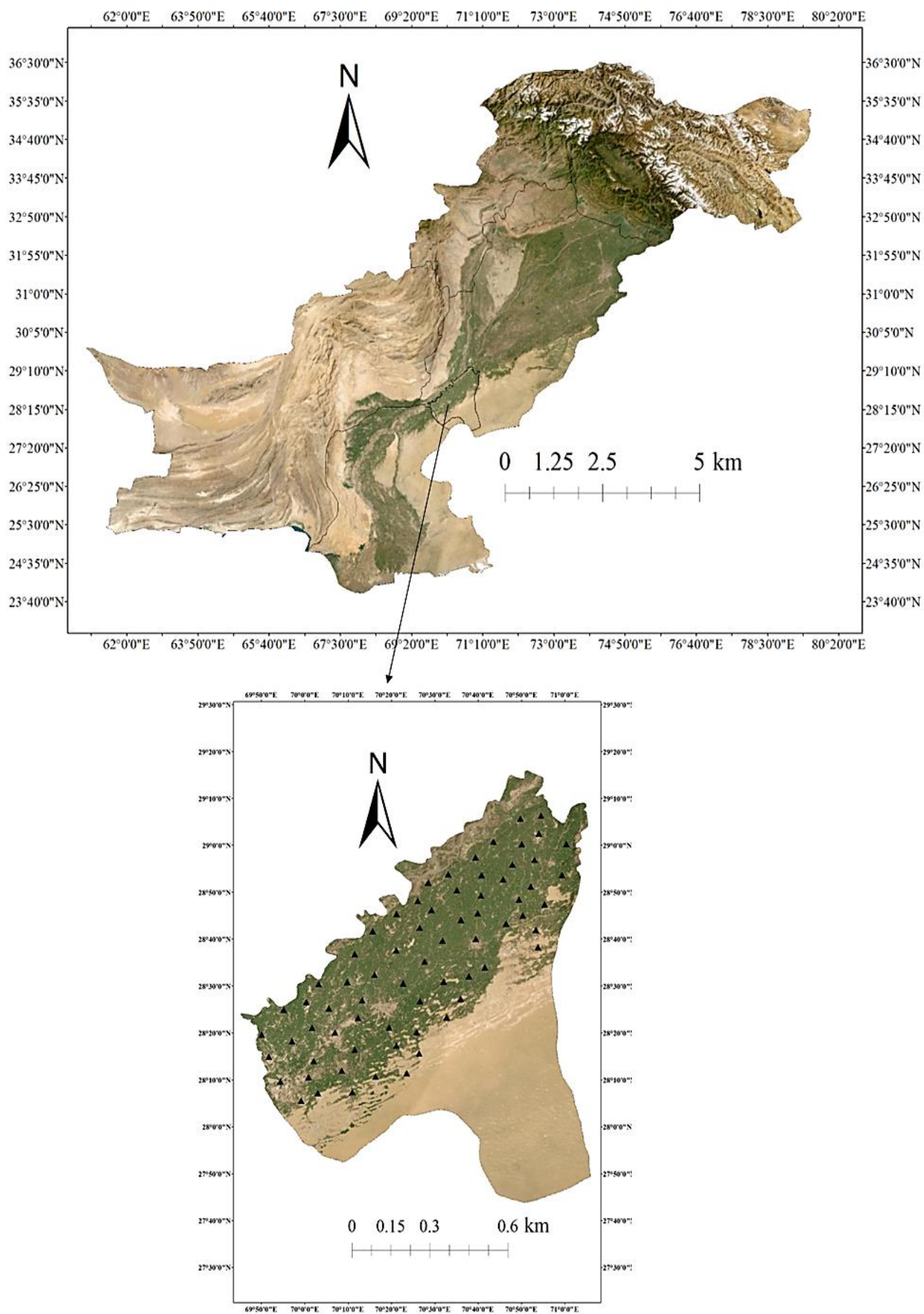


Fig. 1. Geographical location of the surveyed area showing sampling points.

Table 1. Precise location (coordinates) of sampling sites in district Rahim Yar khan.

| S. No. | Latitude (N) | Longitude (E) | S. No. | Latitude (N) | Longitude (E) | S.No. | Latitude (N) | Longitude (E) |
|--------|--------------|---------------|--------|--------------|---------------|-------|--------------|---------------|
| 1. | 28° 09'37" | 69° 54'20" | 25. | 28° 35'11" | 70° 27'37" | 48. | 28° 50'27" | 70° 35'4" |
| 2. | 28° 14'57" | 69° 51'42" | 26. | 28° 30'56" | 70° 32'1" | 49. | 28° 53'49" | 70° 33'5" |
| 3. | 28° 19'36" | 69° 50'0" | 27. | 28° 39'37" | 70° 31'45" | 50. | 28° 52'2" | 70° 28'29" |
| 4. | 28° 18'14" | 69° 56'59" | 28. | 28° 39'37" | 70° 31'45" | 51. | 28° 48'11" | 70° 26'3" |
| 5. | 28° 21'7" | 70° 01'37" | 29. | 28° 44'7" | 70° 36'2" | 52. | 28° 45'21" | 70° 21'8" |
| 6. | 28° 24'55" | 69° 55'5" | 30. | 28° 40'2" | 70° 39'28" | 53. | 28° 41'42" | 70° 15'38" |
| 7. | 28° 26'33" | 70° 00'18" | 31. | 28° 33'57" | 70° 41'33" | 54. | 28° 36'46" | 70° 11'30" |
| 8. | 28° 25'89" | 70° 05'33" | 32. | 28° 32'6" | 70° 37'51" | 55. | 28° 30'49" | 70° 09'48" |
| 9. | 28° 30'27" | 70° 03'9" | 33. | 28° 27'14" | 70° 35'56" | 56. | 28° 32'23" | 70° 16'4" |
| 10. | 28° 13'58" | 70° 02'1" | 34. | 28° 23'19" | 70° 32'42" | 57. | 28° 30'35" | 70° 22'40" |
| 11. | 28° 10'31" | 70° 00'48" | 35. | 28° 20'10" | 70° 25'47" | 58. | 28° 26'44" | 70° 26'32" |
| 12. | 28° 07'7" | 70° 02'59" | 36. | 28° 15'39" | 70° 26'21" | 59. | 28° 52'43" | 70° 45'45" |
| 13. | 28° 05'31" | 69° 59'7" | 37. | 28° 11'24" | 70° 23'29" | 60. | 28° 43'15" | 70° 46'26" |
| 14. | 28° 11'56" | 70° 08'30" | 38. | 28° 17'18" | 70° 21'6" | 61. | 28° 45'28" | 70° 39'55" |
| 15. | 28° 07'21" | 70° 10'55" | 39. | 28° 21'8" | 70° 19'26" | 62. | 28° 49'17" | 70° 40'38" |
| 16. | 28° 10'40" | 70° 16'20" | 40. | 28° 57'28" | 70° 39'23" | 63. | 28° 53'39" | 70° 40'49" |
| 17. | 28° 16'23" | 70° 11'31" | 41. | 29° 00'47" | 70° 43'33" | 64. | 28° 45'3" | 70° 50'20" |
| 18. | 28° 20'6" | 70° 06'56" | 42. | 29° 05'41" | 70° 49'45" | 65. | 28° 41'55" | 70° 53'17" |
| 19. | 28° 23'11" | 70° 12'15" | 43. | 29° 00'15" | 70° 50'4" | 66. | 28° 38'16" | 70° 53'47" |
| 20. | 28° 26'55" | 70° 13'14" | 44. | 29° 06'21" | 70° 54'31" | 67. | 28° 47'23" | 70° 55'22" |
| 21. | 28° 37'36" | 70° 21'6" | 45. | 29° 02'33" | 70° 54'1" | 68. | 28° 48'25" | 70° 49'25" |
| 22. | 28° 42'27" | 70° 26'28" | 46. | 28° 56'55" | 70° 52'58" | 69. | 28° 51'13" | 70° 52'8" |
| 23. | 28° 45'72" | 70° 29'14" | 47. | 28° 55'56" | 70° 47'56" | 70. | 28° 53'41" | 70° 59'21" |
| 24. | 29° 00'17" | 71° 00'22" | | | | | | |

Table 2. Sampling frequency in the representative soil series of the surveyed area.

| Soil series | Sub-group | No of sites | Soil series | Sub-group | No of sites |
|-------------|----------------------|-------------|-------------|----------------------|-------------|
| Awagat | Fluventic Camborthid | 2 | Missan | Halic Camborthid | 4 |
| Bagh | Fluventic Camborthid | 6 | Nabipur | Typic Camborthid | 7 |
| Bahalike | Fluventic Camborthid | 2 | Pacca | Typic Camborthid | 10 |
| Dungi | Halic Camborthid | 2 | Rustam | Typic Torrifluvent | 1 |
| Harunabad | Fluventic Camborthid | 2 | Shahdara | Typic Torrifluvent | 1 |
| Jhakkar | Halic Camborthid | 3 | Sodhra | Typic Torripsamment | 1 |
| Malti | Typic Camborthid | 5 | Sultanpur | Fluventic Camborthid | 13 |
| Miani | Typic Camborthid | 5 | Yazman | Typic Torripsamment | 6 |

Table 3. Descriptivestatistics of physico-chemical properties of soils of the surveyed area.

| Soil property | Mean | SD ^a | Minimum | Maximum | ^b CV % |
|-----------------------|-------|-----------------|---------|---------|-------------------|
| Sand | 34.42 | 22.95 | 6 | 83 | 66.67 |
| Silt | 39.28 | 15.71 | 10 | 63 | 39.99 |
| Clay | 25.77 | 12.19 | 6 | 46 | 47.30 |
| CaCO ₃ (%) | 8.45 | 1.11 | 6.1 | 12 | 13.13 |
| pH | 8.34 | 0.13 | 8.15 | 8.8 | 1.55 |
| EC | 0.59 | 0.22 | 0.26 | 1.4 | 37.28 |
| Organic matter (%) | 0.86 | 0.30 | 0.42 | 1.72 | 33.72 |

^aStandard deviation, ^bCo-efficient of variation**Table 4. Textural class distribution in the surveyed area.**

| Textural class | No of samples | Percent samples |
|-----------------|---------------|-----------------|
| Clay | 6 | 08.33 |
| Loam | 10 | 13.89 |
| Loamy sand | 7 | 09.72 |
| Sandy loam | 11 | 15.28 |
| Silt loam | 15 | 20.83 |
| Silty clay | 16 | 22.22 |
| Silty clay loam | 7 | 09.72 |

Plant available NO₃-N and cotton foliage-N indexing:

NO₃-N content in soils ranged from 3.43-14.24 μg g⁻¹ with the mean value of 8.47μg g⁻¹ (Table 5). Thirteen out of 16 soil series exhibited mean NO₃-N content less than 11 μg g⁻¹. Considering 11 μg g⁻¹ of NO₃-N content in soil as critical level for plant growth (Soltanpour, 1985), our results indicated that hundred percent of the sites sampled from Awagat, Dungi, Missan, Rustam, Sodhra were classified as NO₃-N deficient. Fifty to seventy percent of the sampled sites of soil series Bagh, Harunabad, Pacca, Yazman and Sultanpur were categorized as deficient in

NO₃-N content, while 30 to 40% sampled sites of soil series Jhakkar, Malti, Miani and Nabipur were considered as deficient in plant available NO₃-N content (Table 6). Foliage N content in cotton ranged from 2.44–4.55%, with a mean of 3.52% (Table 5). Considering 3.5% of foliage N as threshold for healthy cotton growth (Jones *et al.*, 1991; Reuter *et al.*, 1997a) 43% of cotton plants suffered from N deficiency in the District.

Nitrogen sources in the soil include rainfall, organic and inorganic fertilizers and nitrogen fixation. It is removed from the soil through crop harvest, leaching, erosion, denitrification and volatilization (Maqsood *et al.*, 2016). The deficiency of plant available nitrogen and foliage N in soil might be due to low organic matter content. It is because of lack of incorporation of crop residues in most of Pakistani soils. According to an estimate that soil organic matter contains around 90 kg of N per ton (Subbarao *et al.*, 2006) secondly crop residues contains 1 to 6% N content (Mahmood, 2000). Another reason for deficiency of total N content in the foliage of cotton plant might be prevailing high temperature in the cotton producing area which leads to rapid hydrolysis of urea forming ammonium ions loosely bound to water molecules leading to conversion of ammonium to

ammonia gas which is evolved (Xing & Zhu, 2000). Calcareous nature of Pakistani soils also increases the relative rate of NH₃ volatilization when N fertilizers are applied (Hamid & Ahmad, 1988; Wang *et al.*, 2004).

Relationship between physico-chemical properties of soil and plant available NO₃-N content: Correlation analyses are summarized in (Table 7). A significant ($p \leq 0.05$) positive relationship was observed between the plant available NO₃-N content and soil organic matter content. While the sand fraction of soil texture and pH of soil were negatively correlated with plant available NO₃-N content. However, this relationship was significant in case of pH while non-significant in case of sand fraction. Positive relationship between plant available NO₃-N and soil organic matter might be due to enhanced ability of soil to retain moisture in the soil which in turn leads to higher nitrification rates. Moreover, mineralization of organic matter releases substantial amount of nutrients (Ahmed *et al.*, 2014). Again negative relationship between sand and plant available NO₃-N content might be due to low water holding capacity of sandy soils, as leaching of NO₃-N content is a common phenomenon in the light textured soils (Rizwan *et al.*, 2016).

Table 5. Descriptive statistics of soil NO₃-N and cotton foliage-N of surveyed area.

| Nutrient | Mean | SD | Minimum | Maximum | CV (%) | Skewness | Kurtosis |
|-----------------------------------------------|------|------|---------|---------|--------|----------|----------|
| Soil NO ₃ -N (µg g ⁻¹) | 8.47 | 3.43 | 3.43 | 14.24 | 40.00 | 0.10 | -1.57 |
| Foliage-N (%) | 3.52 | 0.49 | 2.44 | 4.55 | 13.92 | 0.22 | -0.34 |

Table 6. Soil series wise deficiency of NO₃-N in the soils of Rahim Yar Khan district.

| Soil series | NO ₃ -N | | NO ₃ -N | |
|-------------|---------------------|-------------|---------------------|--|
| | deficient sites (%) | Soil series | deficient sites (%) | |
| Awagat | 100 | Missan | 100 | |
| Bagh | 50 | Nabipur | 43 | |
| Bahalike | 0 | Pacca | 60 | |
| Dungi | 100 | Rustam | 100 | |
| Harunabad | 50 | Shahdara | 0 | |
| Jhakkar | 33 | Sodhra | 100 | |
| Malti | 40 | Sultanpur | 54 | |
| Miani | 40 | Yazman | 67 | |

Table 7. Correlation between soil physico-chemical properties and bioavailable soil NO₃-N content.

| | CaCO ₃ | NO ₃ -N | Organic matter | pH | Clay | Sand |
|--------------------|---------------------|----------------------|---------------------|---------------------|--------|--------|
| NO ₃ -N | -0.07 ^{NS} | | | | | |
| OM | -0.38* | 0.3213* | | | | |
| pH | 0.27* | -0.29* | -0.42* | | | |
| Clay | 0.42* | -0.024 ^{NS} | -0.20 ^{NS} | 0.10 ^{NS} | | |
| Sand | -0.35* | -0.10 ^{NS} | 0.033 ^{NS} | -0.11 ^{NS} | -0.77* | |
| Silt | 0.20 ^{NS} | 0.034 ^{NS} | 0.10 ^{NS} | 0.089 ^{NS} | 0.34* | -0.87* |

*Significant at $p \leq 0.05$; ^{NS} = Non-significant

Spatial variability of plant available NO₃-N and foliage N content: Datasets having skewness values between -2 and +2 are considered to have normal

distribution which is pre-requisite for carrying out geo-statistical analysis of any dataset (Trochim & Donnelly, 2006; Field, 2000; Gravetter & Wallnau, 2014).

Semivariogram modeling was carried out to examine the spatial structure of plant available NO₃-N and associated cotton foliage-N content (Table 8). Spherical model was found best fit to describe spatial structure of plant available NO₃-N content. Plant available NO₃-N content were found moderately spatial dependent. Semivariogram modeling suggested a range of 0.178 km for the spatial dependence of NO₃-N content in the surveyed soils (Fig. 2a). This spatial dependence of plant available NO₃-N might be due to the application of nitrogenous fertilizers at recommended uniform rates without considering the spatial variability of the nutrient in the soils (Ahmed *et al.*, 2014; Liu *et al.*, 2004; Spiker *et al.*, 2005). Semivariogram modeling indicated moderate spatial dependence of plant available NO₃-N content. Similarly, a strong spatial dependence was observed in case of cotton foliage-N contents (Fig. 2b). Digital maps of plant available NO₃-N and cotton foliage-N content prepared using ordinary kriging technique are presented in Fig. 2c, d. Similar techniques were successfully used by different researchers to delineate various areas having low, medium and high nutrient content for site specific nutrient management (Shah *et al.*, 2013; Rafique *et al.*, 2006; Ahmed *et al.*, 2014; Arain *et al.*, 2017).

Table 8. Parameters related to semivariogram model and interpolation of plant available soil NO₃-N and associated cotton foliage-N content.

| Nutrient | Model | Range (km) | Nugget/Sill (%) | RMSE ^a | ASE ^b | RMSE ^c |
|-------------------------------|-----------|------------|-----------------|-------------------|------------------|-------------------|
| Soil NO ₃ -N | Spherical | 0.178 | 32.43 | 1.13 | 3.29 | 3.72 |
| Cotton Foliage-N ^d | Spherical | 0.299 | 19.86 | 1.30 | 0.38 | 0.50 |

^a Root Mean Square Standardize Error, ^b Average Standardize Error, ^c Root mean square error, ^d Nitrogen content in the foliage

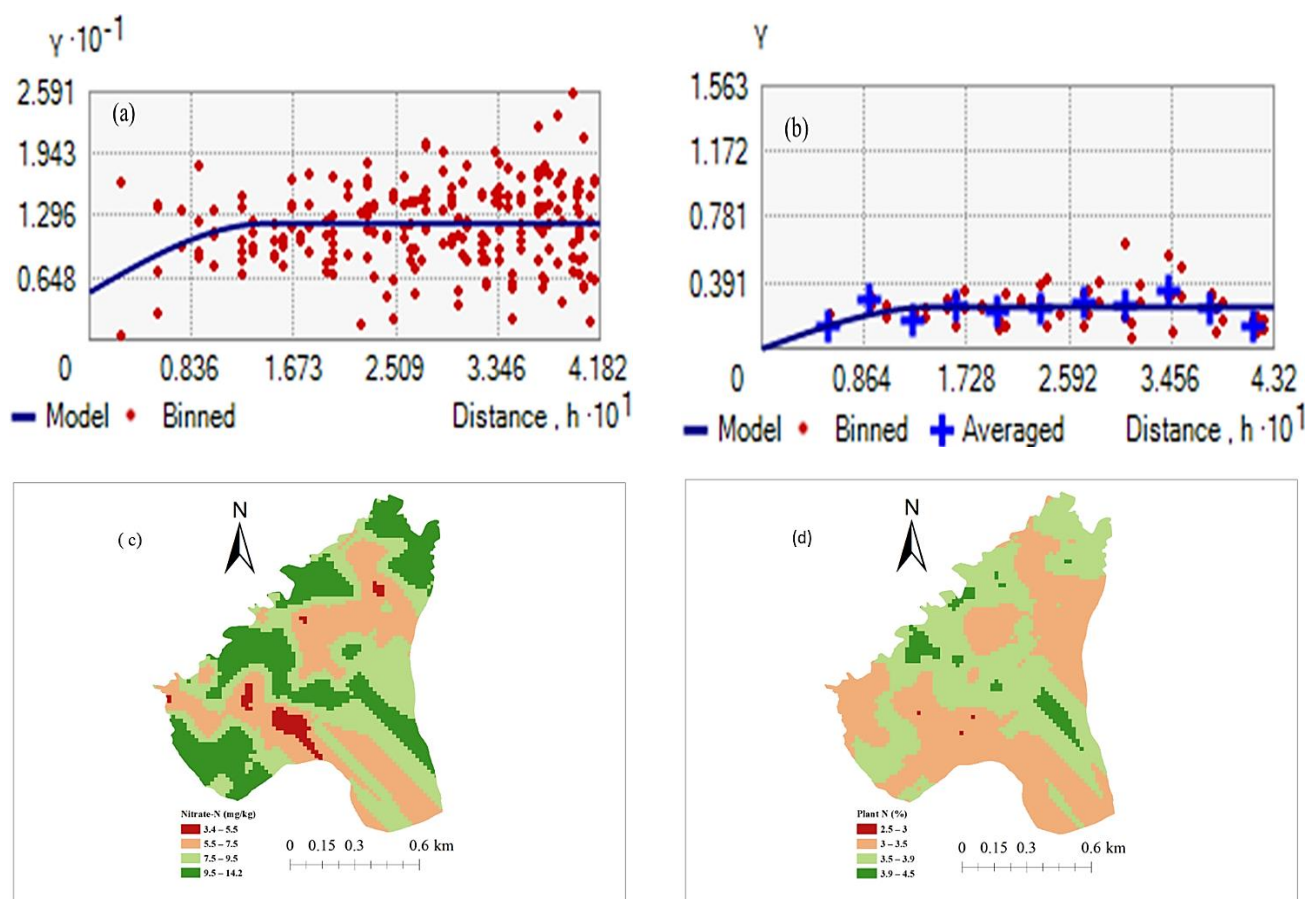


Fig. 2. Semivariogram models indicating spatial dependence of plant available $\text{NO}_3\text{-N}$ (a) and cotton foliage-N (b), Spatial distribution of plant available $\text{NO}_3\text{-N}$ (c), and cotton foliage-N (d).

Conclusion

Deficiency of $\text{NO}_3\text{-N}$ in the soils and total N in cotton producing areas of Pakistan was observed which need to be managed according to site-specific nutrient recommendations by classifying whole area into various nutrient management zone. A detailed survey and GIS based modelling of soil $\text{NO}_3\text{-N}$ and total N for district Rahim Yar Khan indicated acute deficiency of nitrogen in the soils and foliage. A widespread deficiency of soil organic matter was also observed. Significant positive relationship was observed between plant available $\text{NO}_3\text{-N}$ content and organic matter and clay content. Therefore it is needed to formulate recommendations for N to cotton crop on the basis site-specific nutrient management techniques for different zones of whole province. Information generated in this study will be helpful to the researchers and policy maker for planning future studies and devising policies.

References

- Ahmed, H., M.T. Siddique, M. Iqbal and F. Hussain. 2017. Comparative study of interpolation methods for mapping soil pH in the apple orchards of Murree, Pakistan. *Soil Environ.*, 36: 70-76.
- Ahmed, H., M.T. Siddique, S. Ali, N.A. Abbasi, A. Khalid and R. Khalid. 2014. Micronutrient indexing in the apple orchards of Northern Punjab, Pakistan using geostatistics and GIS as diagnostic tools. *Soil Environ.*, 33: 07-16.
- Aishah, A.W., S. Zaayah, A.R. Anuar and C.I. Fauziah. 2010. Spatial variability of selected chemical characteristics of paddy soils in Sawah Sempadan, Selangor, Malaysia. *Malays. J. Soil Sci.*, 14: 27-39.
- Arain, M.A., M. Ahmed and M.A. Khan. 2000. Some physico-chemical characteristics of soils in sugarcane cultivated areas of Nawabshah, Sindh, Pakistan. *Pak. J. Bot.*, 32: 93-100.
- Arain, M.Y., K.S. Memon, M.S. Akhtar and M. Memon. 2017. Soil and plant nutrient status and spatial variability for sugarcane in lower sindh (Pakistan). *Pak. J. Bot.*, 49: 531-540.
- Attar, A., A. Jafarnejadi, G. Sayyad and A. Gholami. 2012. Spatial variability of iron and zinc concentrations in the soils of wheat farms. *Adv. Environ. Biol.*, 6: 1620-1625.
- Bhatti, A.U., D.J. Mulla and B.E. Frazier. 1991. Estimation of soil properties and wheat yields on complex hills using geostatistics and thematic mapper images. *Remote Sens. Environ.*, 37: 181-189.
- Boyer, E.W., C.L. Goodale, N.A. Jaworski and R.W. Howarth. 2002. Anthropogenic nitrogen sources and relationships to riverine nitrogen export in the northeastern USA. *Biogeochem.*, 57: 137-169.
- Cambardella, C.A., T.B. Moorman, J.M. Novak, T.B. Parkin, R.F. Turco and A.E. Konopka. 1994. Field scale variability of soil properties in central Iowa soils. *Soil Sci. Soc. Amer. J.*, 58: 1501-1511.
- Cameron, K.C., H.J. Di and J.L. Moir. 2013. Nitrogen losses from the soil/plant system: a review. *Ann. Appl. Biol.*, 162: 145-173.
- Cottenie, A. 1980. Soil and plant testing as a basis of fertilizer recommendations. *FAO Soils Bulletin* 38/2.
- Ferguson, R.B., G.W. Hergert, J.S. Schepers, C.A. Gotway, J.E. Cahoon and T.A. Peterson. 2002. Site-specific nitrogen

- management of irrigated maize. *Soil Sci. Soc. Amer. J.*, 66: 544-553.
- Field, A. 2000. Discovering statistics using spss for windows. London-Thousand Oaks- New Delhi, Sage publications.
- Gee, G.W. and J.W. Bauder. 1982. Hydrometer method. In: *Methods of Soil Analysis, Part 1*, (Eds): Klute, A. and A.L. Page. American Society of Agronomy, Madison, WI, USA, 383-411.
- Gravetter, F. and L. Wallnau. 2014. Essentials of statistics for the behavioral sciences. Eds: 8. Belmont, CA, Wadsworth.
- Hamid, A. and A. Ahmad. 1989. Effect of phosphate fertilizers on ammonia volatilization from urea in alluvial alkaline soil. *Pak. J. Soil Sci.*, 15: 52-55.
- Hani, A., E. Pazira, M. Manshouri, K.S. Babaie and M.T. Ghahroudi. 2010. Spatial distribution and mapping of risk elements pollution in agricultural soils of southern Tehran, Iran. *Plant Soil Environ.*, 56: 288-296.
- Hirel, B., T. Tetu, P.J. Lea and F. Dubois. 2011. Improving nitrogen use efficiency in crops for sustainable agriculture. *Sustainability*, 3: 1452-1485.
- Isaaks, E.H and R.M. Srivastava. 1989. An introduction to applied geostatistics. Oxford University Press, New York.
- Jones, J.B., B. Wolf and H.A. Mills. 1991. Plant Analysis Handbook. Macro-Micro Publishing, Inc. Athens, Georgia, USA, pp. 213.
- Ledgard, S.F., J. Luo, M.S. Sprosen, J.B. Wyatt, S.F. Balvert and S.B. Lindsey. 2014. Effects of the nitrification inhibitor dicyandiamide (DCD) on pasture production, nitrous oxide emissions and nitrate leaching in Waikato, New Zealand. *J. Agric. Res.*, 57: 294-315.
- Leoppert, R.H., C.T. Hallmark and M.M. Koshy. 1984. Routine procedure for rapid determination of soil carbonates. *Soil Sci. Soc. Amer. J.*, 48: 1030-1033.
- Liu, X.M., J.M. Xu, M.K. Zhang, J.H. Huang, J.C. Shi and X.F. Yu. 2004. Application of geostatistics and GIS technique to characterize spatial variabilities of bioavailable micronutrients in paddy soils. *J. Environ. Geol.*, 46: 189-194.
- Mahmood, T., R. Ali, M.I. Sajjad, M.B. Chaudhri, G.R. Tahir and F. Azam. 2000. Denitrification and total fertilizer N losses from an irrigated cotton field. *Biol. Fert. Soils* 31: 270-278.
- Maqsood, M.A., U.K. Awan, T. Aziz, H. Arshad, N. Ashraf and M. Ali. 2016. Nitrogen Management in Calcareous Soils: Problems and Solutions. *Pak. J. Agri. Sci.*, 53: 79-95.
- McLean, E.O. 1982. Soil pH and lime requirement. In *Methods of Soil Analysis, Part 2: Chemical and Microbiological Properties*. In: (Eds.): Page, A.L., R.H. Miller and D.R. Keeney. American Society of Agronomy, Madison, WI, USA, pp. 198-209.
- Nabi, G., H. Ahmed and I. Ali. 2018. Spatial distribution of pH in the soil profiles of representative soil series from rice producing area, district Sheikhpura. *Soil Environ.*, 37: 28-34.
- Nelson, D.A. and L. Sommers. 1983. Total carbon, organic carbon, and organic matter. *Methods of soil analysis: Part 2 chemical and microbiological properties*, pp. 539-579.
- Rafique, E., A. Rashid, J. Ryan and A.U. Bhatti. 2006. Zinc deficiency in rainfed wheat in Pakistan: magnitude, spatial variability, management, and plant analysis diagnostic norms. *Comm. Soil Sci. Plant Anal.*, 37: 1-17.
- Reuter, D.J., D.G. Edwards and N.S. Wilhelm. 1997a. Temperate and sub-tropical crops. In: *Plant Analysis-An Interpretation Manual* Reuter, D.J. and J.B. Robinson (Eds.) CSIRO Publishing, Collingwood, Victoria, Australia, pp. 81-284.
- Rizwan, M., M.T. Siddique, H. Ahmed, M. Iqbal and T. Ziad. 2016. Spatial variability of selected physico-chemical properties and macronutrients in the shale and sandstone derived soils. *Soil Environ.*, 35(1): 12-21.
- Robinson, T.P and G. Metternicht. 2006. Testing the performance of spatial interpolation techniques for mapping soil properties. *Comp. Electron. Agric.*, 50: 97-108.
- Shah, Z., W. Malik, A. Bhatti and H. Rahman. 2013. Spatial variability of nutrients in wheat plants in semiarid region of North Western Pakistan. *Commun Soil Sci. Plant Anal.*, 44: 2472-2487.
- Sokal, R.R and F.J. Rohlf. 1981. Biometry. WH Freeman and Company, New York.
- Soltanpour, P.N. and S. Workman. 1979. Modification of NaHCO₃ DTPA soil test to omit carbon black. *Commun Soil Sci. Plant Anal.*, 10: 1411-1420.
- Soltanpour, P.N. 1985. Use of AB-DTPA soil test to evaluate elemental availability and toxicity. *Commun Soil Sci. Plant Anal.*, 16: 323-338.
- Spiker, J., S.P. Vriend and P.F.M. Vans-Ganns. 2005. Natural and anthropogenic patterns of covariance and spatial variability of minor and trace elements in agricultural top soil. *Geoderma.*, 127: 24-35.
- Steel, R.G.D. and J.H. Torrie. 1980. Principles and Procedure of Statistics. McGraw Hill Book Co. Inc., New York.
- Subbarao, G.V., O. Ito, K.L. Sahrawat, W.L. Berry, K. Nakahara, T. Ishikawa, T. Watanabe, K. Suenaga, M. Rondon and I.M. Rao. 2006. Scope and strategies for regulation of nitrification in agricultural systems – Challenges and opportunities. *Crit. Rev. Plant Sci.* 25: 1-33.
- Trochim, W.M. and J.P. Donnelly. 2006. The research methods knowledge base. Eds: 3rd. Cincinnati, OH: Atomic Dog.
- Wang, X.F., A.S. Auler, R.L. Edwards, H. Cheng, P.S. Cristalli, P.L. Smart, D.A. Richards and C.C. Shen. 2004. Wet periods in north-eastern Brazil over the past 210 kyr linked to distant climate anomalies. *Nature*, 432: 740-743.
- Wilding, L.P. 1985. Spatial variability: It's documentation, accommodation and implication to soil surveys. In: (Eds.): Nielsen, D.R and J. Bouma. *Soil Spatial Variability*, Pudoc, Wageningen, Netherland, pp. 166-194.
- Xing, G.X. and Z.L. Zhu. 2000. An assessment of N loss from agricultural fields to the environment in China. *Nutr. Cyc. Agroeco.*, 57: 67-73.

(Received for publication 29 June 2022)